

The Methane Mapping Project

From Data to Information to Action



Climate Impacts of Methane (CH₄)

- 84x as potent as CO₂ in short term
- More efficient at absorbing heat
- 25% of warming experienced today from methane



EDF SERIES OF METHANE STUDIES

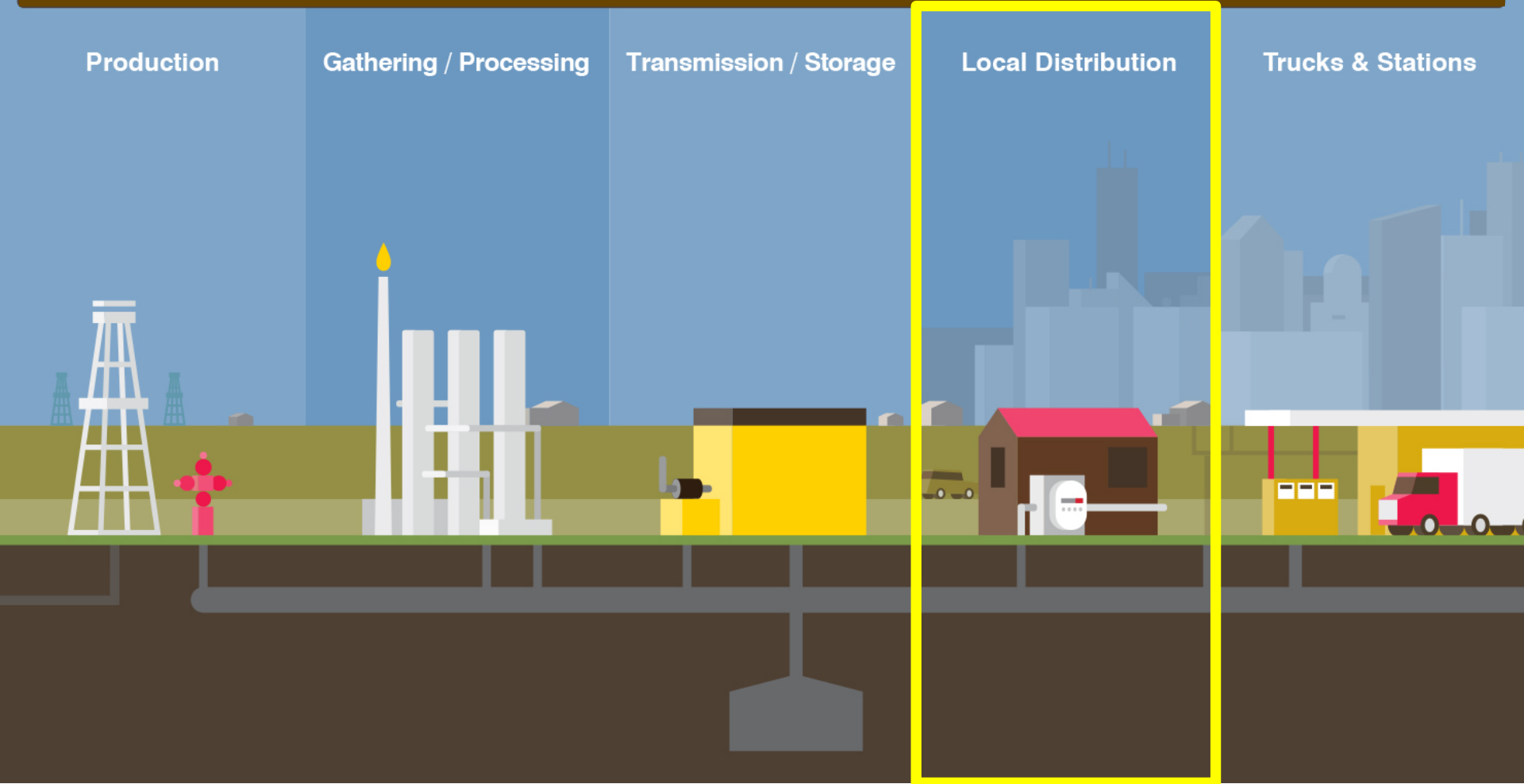
Production

Gathering / Processing

Transmission / Storage

Local Distribution

Trucks & Stations

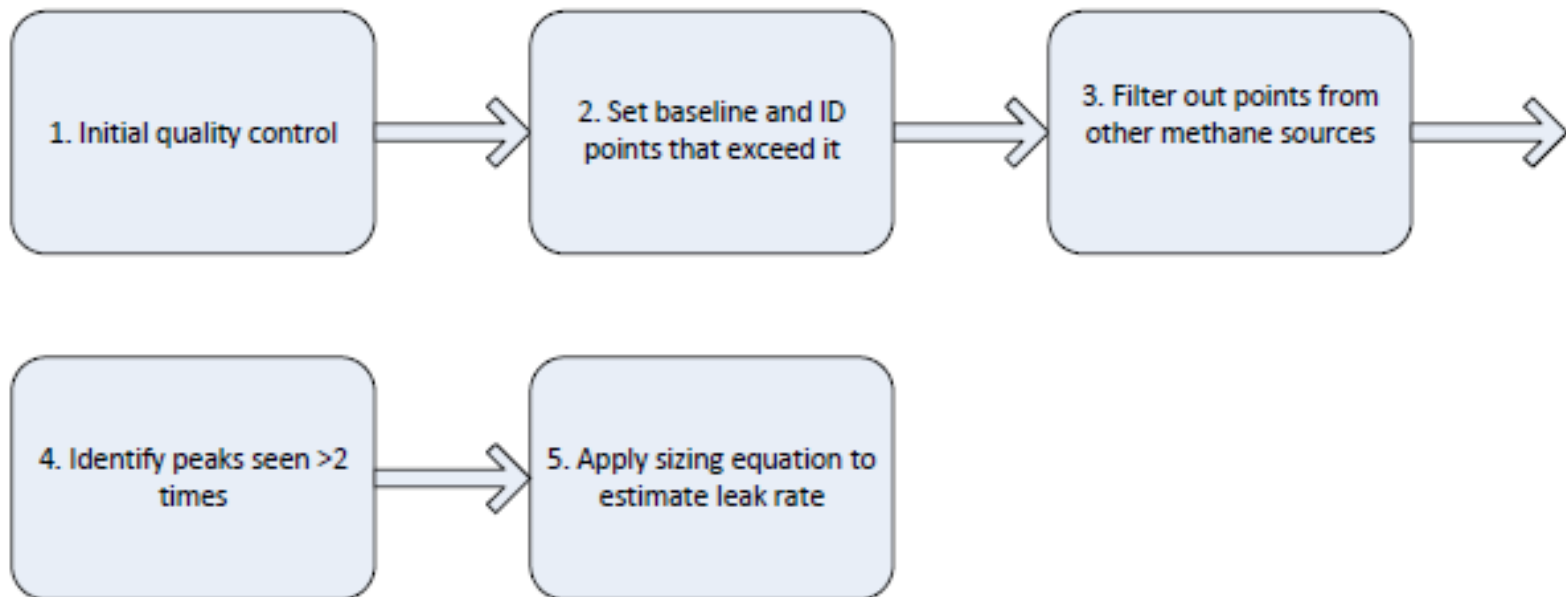


16 methane studies to estimate methane leakage!



Data Processing and Algorithm

- Collected over 15 million data points
- EDF partnered with Joe von Fischer at Colorado State University



Climate and energy

- ▶ The problem
- ▶ Cleaner, smarter energy
- ▶ Stronger laws and policies
- ▶ Private-sector partnerships

EDF Climate Corps
Work with labor unions

▶ **Maps of natural gas leaks**

- Why leaks are a problem
- ▶ How to fix the problem
- ▶ City snapshots
- ▶ How this data is different
- About the partnership

▶ Global initiatives

▶ Policy and resources

Our experts

Oceans

Ecosystems

Health

Policy resources

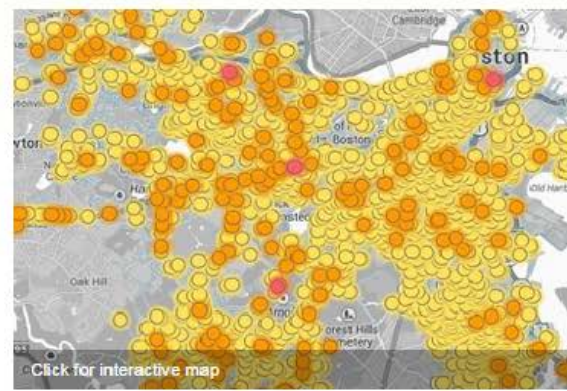
Where we work

Natural gas: Local leaks impact global climate

EDF and Google Earth Outreach use new approach to pinpoint climate pollution

Natural gas heats our homes and cooks our dinner. But when natural gas—mostly methane—leaks into the air, it's a big problem for the climate. So EDF and Google Earth Outreach teamed up to build a faster, cheaper way to find and assess leaks under our streets and sidewalks. We tested it as part of a pilot mapping program, and here's what we found.

Boston: Older pipes, more leaks



Indianapolis: Newer pipes, fewer leaks



Staten Island, New York



Bring the project to more places

Nominate your city to be mapped, which also shows support for reducing leaks.



Cassandra Brunette
CBrunette@edf.org
415-293-6084

